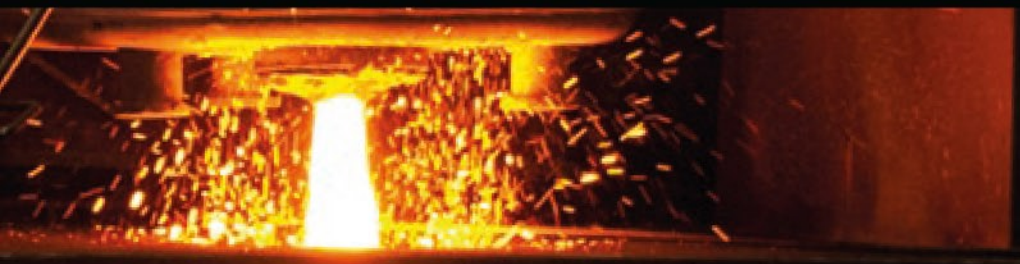


Feuerfestprodukte für die
Gießereiindustrie
Refractories for the
Foundry Industry





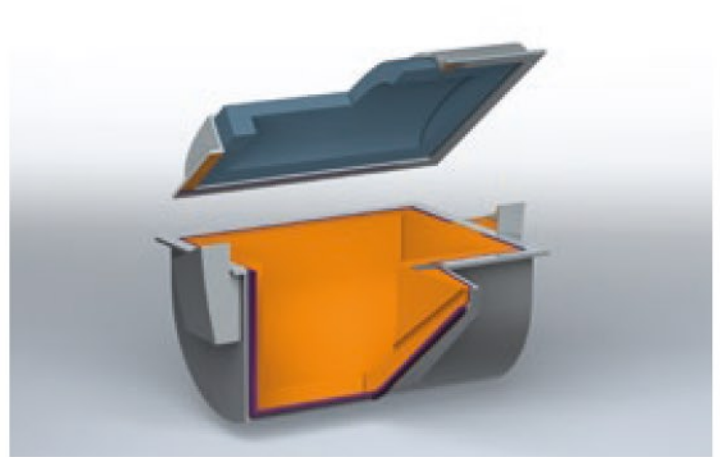
Feuerfestprodukte für die Eisengießerei Refractories for the Iron Foundry

Langzeit Kupolofen Longterm Cupola



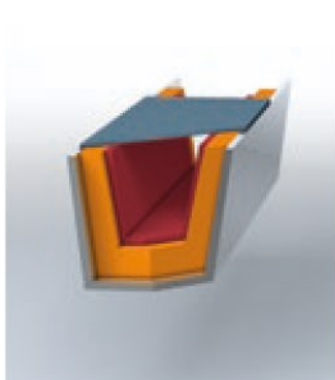
- Eisensteinbereich**
Iron Brick Area
INTOVAL C 56 WS 8
INTOVAL SF 55 ZR
- Schacht**
Stack
INTOVAL C 56 WS 8
INTOVAL GUN 58/II
INTOVAL GUN 970 T II
- Schmelzzone**
Melting Zone
INTOVAL GUN HO-R 19 II
- Gestell/Siphon**
Well/Siphon
INTOVAL HO-R 25
INTOVAL RAM 65 SiC
INTOVAL RAM HO B 9
- Schlackenabstich**
Slag Delivery Pipe
INTOVAL HO-R 25
*verfügbar als Fertigbauteil
available as precast shape*

Vorherd Receiver



- Verschleißfutter**
Wear Lining
INTOVAL 853 T
INTOVAL T 57
INTOVAL SF 55 ZR
INTOVAL RAM 58 S
INTOVAL VT-A 9 GF
- Deckel**
Cover
INTOVAL T 80 PF MOD IV
INTOVAL HO DF
INTOVAL RAM 90 S
- Isolierung**
Insulation
CERAMIC FIBRES
INTOVAL VL 1000 HT/1

Eisenrinne Iron Launder



- Verschleißfutter**
Wear Lining
INTOVAL SF 55 ZR
INTOVAL T 57
INTOVAL 853 T
INTOVAL RAM 58 S
INTOVAL RAM VT-A 9 GF
- Pflege**
Maintenance
INTOVAL GUN 52
- Deckel**
Cover
INTOVAL VL 1520

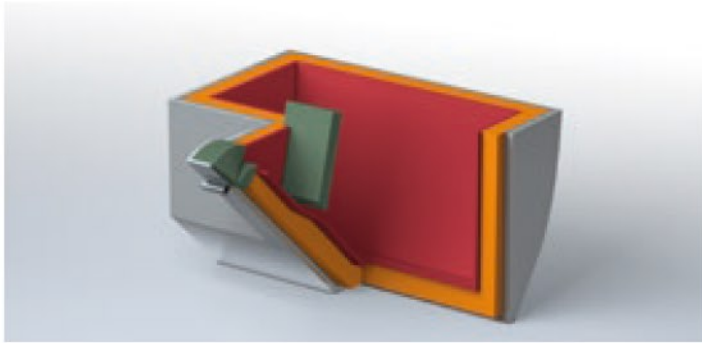
Gieß- und Behandlungspfanne Casting and Treatment Ladle



- Verschleißfutter**
Wear Lining
INTOVAL 853 T
INTOVAL SF 55 ZR
INTOVAL RAM 58 S
INTOVAL RAM VT-A 9 GF
INTOVAL RAM 90 Si
- Pflege**
Maintenance
INTOVAL GUN 51
INTOVAL GUN 52



Vergießpfanne Pouring Ladle

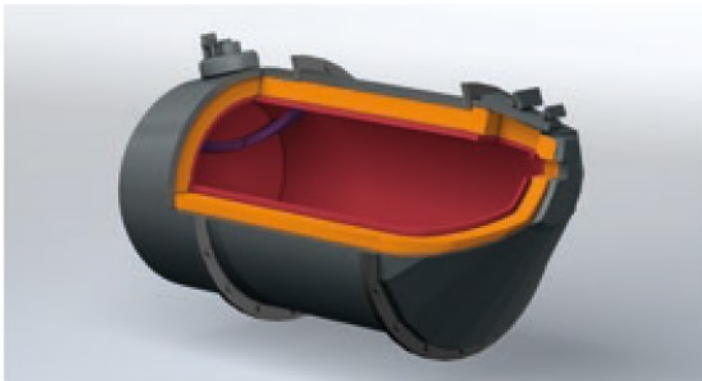


Verschleißfutter
Wear Lining
INTOVAL 853 T
INTOVAL T 57
INTOVAL SF 55 ZR

Pflege
Maintenance
INTOVAL GUN 51
INTOVAL GUN 52

Ausguss- und Schlackenstein
Outlet and Slag Bricks
INTOVAL 853 T II SiC
verfügbar als Fertigbauteil
available as precast shape

Georg-Fischer-Konverter Georg-Fischer-Converter

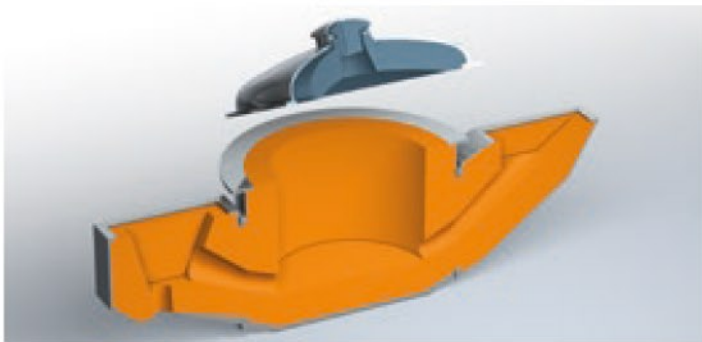


Verschleißfutter
Wear Lining
INTOVAL RAM VT-A 9 GF
INTOVAL 853 T
INTOVAL T 57
INTOVAL SF 55 ZR

Pflege
Maintenance
INTOVAL GUN 51
INTOVAL GUN 52

Konverterplatte
Converter Plate
INTOVAL 853 T II SiC
verfügbar als Fertigbauteil
available as precast shape

Unbeheizte Vergießeinrichtung Unheated Pouring Furnace



Deckel
Cover
INTOVAL T 80 PF MOD IV
INTOVAL VL 1400 PP

Beheizte Vergießeinrichtung Heated Pouring Furnace



Verschleißfutter
Wear Lining
INTOVAL T 93
INTOVAL SF 55 ZR
INTOVAL 967 T

Spezifikationen Specifications

SYSPRO Description	Type	Chemische Analyse (in %) Chemical Analysis (in %)										Grain Size	Temperature Limit [°C]	Bonding	Required Material (t/m³)
		Al ₂ O ₃	MgO	SiO ₂	CaO	Fe ₂ O ₃	SiC	ZrO ₂	TiO ₂	P ₂ O ₅	C				
ULTIMAX	basic gunning	1,5	88	6	2	<1,5						0-6	1750	chemical-ceramic	2,0
ULTIMAX PB	basic gunning	<1	84	5	4	<1,5				3,5		0-6	1750	chemical-ceramic	2
ULTIMAX PB 1	basic gunning	<1	82	5	6	<1,5				3,5		0-6	1750	chemical-ceramic	2
ULTIMAX PO	basic gunning	<1	77	12,5	3	<3				2		0-6	1650	chemical-ceramic	2
INTOMAG 469 KO	basic gunning	1	86	7	3,5	1						0-3	1750	chemical-ceramic	2,1
INTOMAG ELO 95 IS	repairing	1,5	88	5	2	1,8						0-3	1700	chemical-ceramic	2,6
FERRO-HEARTH	basic ramming		90	0,7	11	6,5						0-6	1750	ceramic	2,7
FERRO-HEARTH S	basic ramming		82	0,7	10	6						0-8	1750	ceramic	2,75
FERRO-SLING	basic ramming		82	0,6	9	6,8						0-8	1700	ceramic	2,4
FERRO-SLING S	basic ramming		83	0,7	7	7,2						0-5	1700	ceramic	2,45
PARTEX C	basic gunning mix	2,5	65	23,5	1	3,5				<0,5		0-3	1620	chemisch	2,7
FLOWEX	basic repair	0,5	45	8,5	36	0,5				<1		0-6	1750	chemisch	2,1
FLOWEX-S	basic repair	<0,5	79	8,5	2,5	0,5				0,9		0-6	1750	chemisch	2,7
INDUVAL S	dry ramming	90	9,5									0-6	1750	chemical-ceramic	2,76
INDUVAL SL	dry ramming	86	12,5									0-3	1750	chemical-ceramic	2,89
INDUVAL XL	dry ramming	68	29	0,5	0,5				<1,5			0-6	1650	ceramic	2,9
INTOVAL 790 T/II	self flowing castable	81		14	1,5	1			<2			0-6	1600	hydraulic	2,8
INTOVAL 834 T	thixotropic castable	95,5	2,4		<2							0-6	1780	hydraulic	3,05
INTOVAL 853 T	thixotropic castable	57		38	2	0,5						0-10	1600	hydraulic	2,5
INTOVAL 890 T	thixotropic castable	67		26	2,5	1						0-6	1650	hydraulic	2,31
INTOVAL 927 T	castable	65		28	2	<1			1,5			0-6	1600	hydraulic	2,48
INTOVAL C 56 WS 8	castable	50		41	3	<1			<0,5			0-6	1350	hydraulic	2,3
INTOVAL C 57	castable	57		40	1,5	1						0-6	1600	hydraulic	2,3
INTOVAL GUN 51	gunning	52		40,5	4	<1,5			1,8			0-6	1450	hydraulic	2,25
INTOVAL GUN 52	gunning	52		34	6,5	<1,5		3				0-6	1550	hydraulic	2,21
INTOVAL GUN 970 T II	gunning	75		7	13	<2			3			0-6	1450	hydraulic	2,82
INTOVAL GUN 58/II	gunning	56		34	8	<0,5			<0,5			0-6	1450	hydraulic	2,25
INTOVAL GUN HO-R 19/II	gunning	66		8	3		20				1,5	0-6	1550	hydraulic	2,35
INTOVAL T 85 SP 10 REPA FEIN	gunning, throwing	91	4,5		3							0-1	1700	hydraulic	2,55
INTOVAL M 12	mortar	8,5		89		<0,5			<1,5			0-1	1200	ceramic	1,4
INTOVAL M 15 F	mortar	8		90		<0,7						0-0,5	1500	chemical-ceramic	1,6
INTOVAL M 45 F	mortar	48		45		1			0,5			0-0,5	1450	ceramic	1,6
INTOVAL M 88 F	mortar	86		10		<1			<2,5			0-1	1700	ceramic	2,5
INTOVAL M 88 T	mortar	83		11		<2			2			0-1	1700	ceramic	2,7
ZIROL FS-C 1	mortar	6		33				60				0-0,5	1500	chemical-ceramic	3,1
METEOR ORIGINAL	mortar	1		91							4,5	0-0,5	1700	chemical-ceramic	1,2
INTOVAL HO DF	castable	54		39	3,5							0-6	1450	hydraulic	2,25
INTOVAL HO-R 25	castable	70		6	1,5		16		<2		2,5	0-10	1650	hydraulic	2,95
INTOVAL RAM 58 S	ramming	60		36		<1						0-6	1600	chemical-ceramic	2,4
INTOVAL RAM VT-A 9 GF	ramming	90		5		0,5			42			0-3	1650	chemical-ceramic	2,8
INTOVAL RAM 90 S	ramming	92		6		<0,5						0-6	1750	ceramic	2,9
INTOVAL RAM 90 SI	ramming	5		90		<0,5						0-3	1500	chemical-ceramic	2,5
INTOVAL RAM HO B 9	ramming	58		10		1,5	19		2			0-6	1550	ceramic	2,7
INTOVAL RAM SIC 65	ramming	64		4,5		<1,5	16				5	0-6	1600	chemical-hydraulic	2,7
ZIROL RAM G	ramming	19		28				51				0-6	1600	chemical-ceramic	3,65
ZIROL PS	ramming	18		28				53				0-6	1600	chemical-ceramic	3,7
INTOVAL SF 55 ZR	self-flow castable	65		23	1,7	0,6		18				0-6	1700	hydraulic	2,85
INTOVAL SF 85-10 II	self-flow castable	95	3	0,5	0,8							0-6	1750	hydraulic	3,05
INTOVAL T 93	castable	93		2,5	<2	0,5			1,5			0-6	1800	hydraulic	3,13
INTOVAL T 57	thixotropic castable	57		39	2,2	0,5						0-6	1600	hydraulic	2,6
INTOVAL T 80 PF MOD IV	vibrating	81		12	1,7	1			2,1			0-6	1600	hydraulic	2,87
INTOVAL T 95 GM NK	vibrating	92		3	<1,8	<0,5			2			0-8	1650	hydraulic	3,3
INTOVAL TU 85 CRS	vibrating	86		3,5	1	0,5			0,3			0-10	1800	hydraulic	3,2
INTOVAL VL 1000 HT/ 1	lightweight castable	87		0,15	12	0,1						0-6	1500	hydraulic	1,15
INTOVAL VL 1400 PP	lightweight castable	42,5		40	10	2,5			1,5			0-4	1300	hydraulic	1,55
INTOVAL VL 1520	lightweight castable	60		30	5	<2						0-8	1450	hydraulic	1,52
INTOVAL GUN VL 900 TO	lightweight gunning	36		37	19	3			1,5			0-5	1250	hydraulic	1,26
INTOVAL GUN VL 1400	lightweight gunning	43		42	9,5	2			<1,5			0-5	1400	hydraulic	1,6

INTOCAST AG
Refractory Products and
Casting Auxiliaries
Pempelfurtstr. 1
D-40880 Ratingen

Telephone +49 / (0) 21 02 / 45 28 - 944
Fax +49 / (0) 21 02 / 45 28 - 46

www.intocast.com
marketing@intocast.com